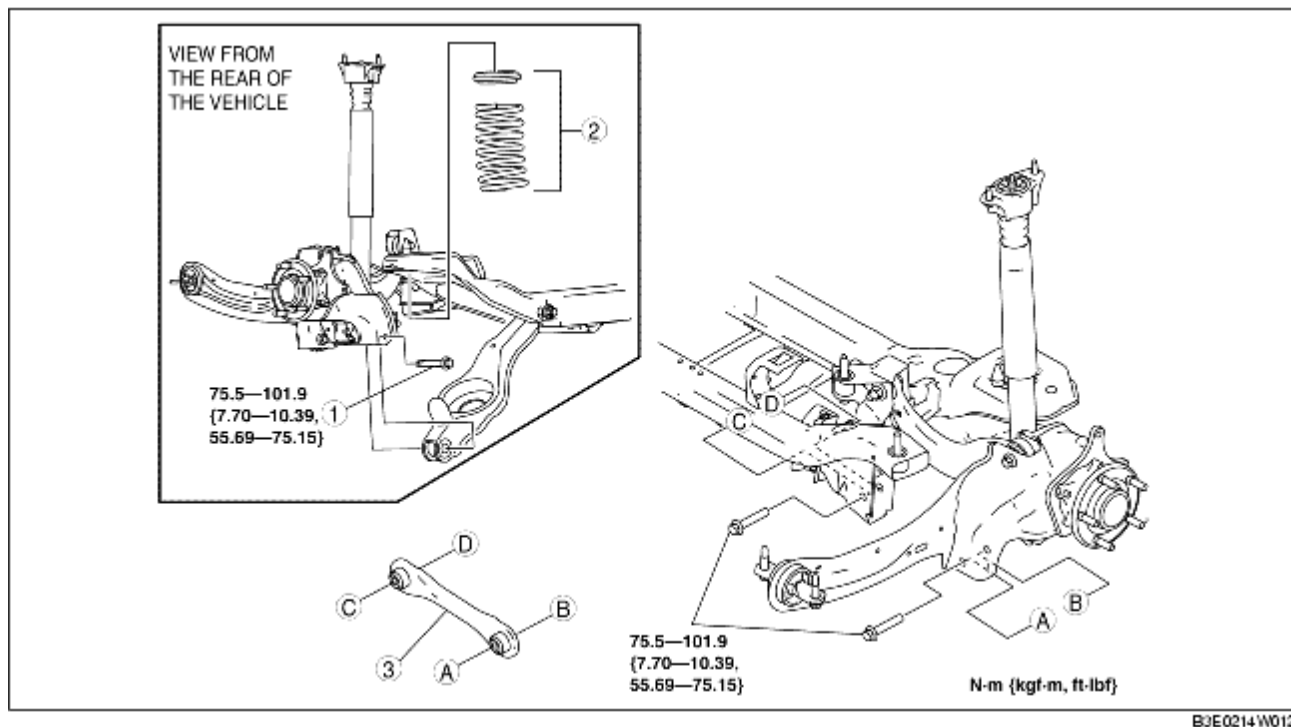


REAR LATERAL LINK REMOVAL/INSTALLATION

B3E021428600W01

1. Remove the rear auto leveling sensor. (See [AUTO LEVELING SENSOR REMOVAL/INSTALLATION.](#))
2. Remove the rear stabilizer. (See [REAR STABILIZER REMOVAL/INSTALLATION.](#))
3. Remove in the order indicated in the table.
4. Install in the reverse order of removal.
5. Inspect the wheel alignment and adjust it if necessary.

(See [REAR WHEEL ALIGNMENT.](#))



2. Loosen the rear lower arm inner bolt.
3. Remove the rear lower arm outer bolt.

Rear Lateral Link Installation Note

1. Install the rear lateral link so that the rib is facing toward the front of the vehicle.

